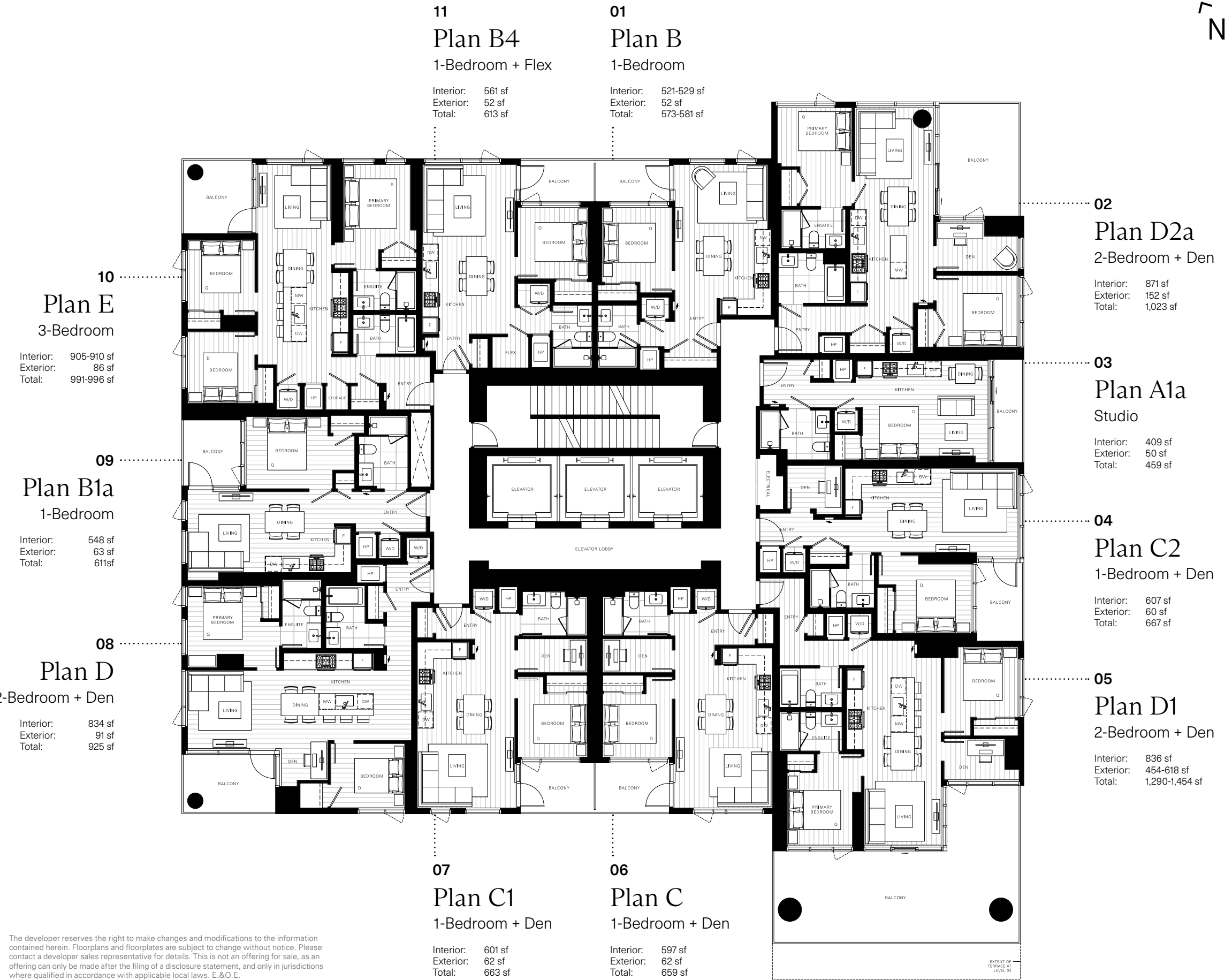




Level 34-58



The developer reserves the right to make changes and modifications to the information contained herein. Floorplans and floorplates are subject to change without notice. Please contact a developer sales representative for details. This is not an offering for sale, as an offering can only be made after the filing of a disclosure statement, and only in jurisdictions where qualified in accordance with applicable local laws. E.&O.E.



11
Plan B4
1-Bedroom + Flex

Interior: 561 sf
Exterior: 52 sf
Total: 613 sf

01
Plan B
1-Bedroom

Interior: 521-529 sf
Exterior: 52 sf
Total: 573-581 sf

10
Plan E
3-Bedroom

Interior: 905-910 sf
Exterior: 86 sf
Total: 991-996 sf

09
Plan B1b
1-Bedroom + Flex

Interior: 548 sf
Exterior: 63 sf
Total: 611 sf

08
Plan D
2-Bedroom + Den

Interior: 834 sf
Exterior: 91 sf
Total: 925 sf

07
Plan C1
1-Bedroom + Den

Interior: 601 sf
Exterior: 62 sf
Total: 663 sf

06
Plan C
1-Bedroom + Den

Interior: 597 sf
Exterior: 62 sf
Total: 659 sf

02
Plan D2b
2-Bedroom + Den

Interior: 870-871 sf
Exterior: 152-158 sf
Total: 1,023-1,028 sf

03
Plan A1b
Studio

Interior: 409-411 sf
Exterior: 50 sf
Total: 459-461 sf

04
Plan C2
1-Bedroom + Den

Interior: 607 sf
Exterior: 60 sf
Total: 667 sf

05
Plan D1
2-Bedroom + Den

Interior: 836 sf
Exterior: 454-618 sf
Total: 1,290-1,454 sf



Level 59-65



The developer reserves the right to make changes and modifications to the information contained herein. Floorplans and floorplates are subject to change without notice. Please contact a developer sales representative for details. This is not an offering for sale, as an offering can only be made after the filing of a disclosure statement, and only in jurisdictions where qualified in accordance with applicable local laws. E.&O.E.